

MODERN LUXURY

INTERIORS

VOLUME 2, 2025

MODERNLUXURY.COM



Heritage BLOOM

Aerin Lauder's
Palm Beach Paradise

THE OUTSIDERS:
THE PEOPLE, PROJECTS & PRODUCTS TO
INSPIRE LUXURIOUS OUTDOOR LIVING

In the airy living room, a refinished Chairish-sourced kayak by Little Bay Boards makes a splash above a custom sofa and coffee table designed by Gemma Parker.

Interior designer Gemma Parker elevates a waterside retreat in Traverse City, Mich. into a warm and welcoming family residence. *by* KAILA STANG
photography by DUSTIN HALLECK

Lake Michigan Luxe





Clockwise from top left: In the lower level bar area, cabinetry by O'Brien Harris is finished in a striking custom blue paint and paired with Hollywood at Home's Athletic Club side chairs upholstered in Katie Leede's Sturdy Stripe fabric; quartzite countertops in Iceberg from Calia Stone combine with Dover Bell pendants by The Urban Electric Company to bring a luminous elegance to the kitchen; a commissioned Lisa Lebofsky artwork adds visual interest to the office, which is centered around a custom desk by New Style Cabinets; the entryway sets a welcoming tone with a custom rug by Gemma Parker Design in collaboration with Tai Ping and a Saber Leg bench by Formations through Holly Hunt.



THE CLIENT

In search of the perfect design team for their vacation retreat in Traverse City, Mich., a family-oriented couple with a lively household discovered Chicago-based designer Gemma Parker (gemma-parker-design.com) via a referral from White & Liebler Architects. Having interviewed several firms across the Midwest, they were drawn to Parker's meticulous approach and proven track record of successful collaborations. With plans to make the property their second home and personal sanctuary, the homeowners entrusted Parker's team with bringing their vision to life.

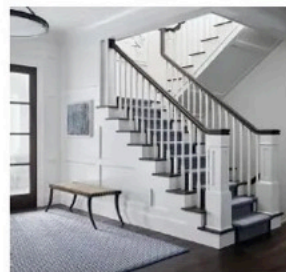
THE PRIORITY

The client's main goal was to create a home where their large family could gather for years to come. "They wanted a home with a lot of character that wouldn't feel dated over time," explains Parker. "This house [needed to be] designed to live large enough for entertaining, yet feel intimate enough for a small family."

THE CHALLENGE

Balancing the expansive, open-plan layout

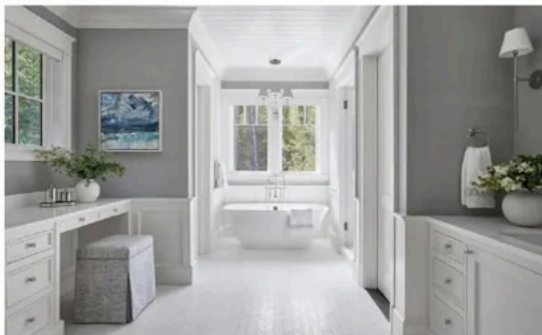
with the need for intimacy in large spaces while still maintaining a seamless flow between indoor and outdoor areas took serious strategizing on the design team's part. Adds Parker, "It was important that we ensured that Lake Michigan and the natural landscaping remained the centerpiece of every room inside. This lake house was built to be the ultimate lakeside retreat, and the lake was the focal point >





“The client wanted us to design the home right down to all of the books and accessories, which allowed them to show up with their suitcases right after install and immediately begin relaxing.”

—GEMMA PARKER



From top: A custom bed takes center stage in the primary bedroom, while a commissioned Brendan Stuart Burns painting adds an artful, moody flourish; the primary bathroom sets a soothing scene with a Victoria+Albert freestanding tub and Carlisle & Co.'s Abaca Horizon Vinyl wallcovering sourced from Holly Hunt, with artwork by John Santoro from McCormick Gallery providing a pop of color.

◀ that dictated the design, both inside and out.” The color palette was designed to reflect the lake’s ever-changing moods, shifting from soft tones on the upper floors to deeper, stormier hues below. The design had to ensure that the space was both durable for large family gatherings and timeless, to withstand the test of time and remain a gathering place for generations.

THE DETAILS

Parker’s team thrived on interpreting each ▶

< family member's desires, taking the time to interview the children about their room preferences and review fabric schemes with them to better understand their personalities and tastes. "The client wanted us to design the home right down to all of the books and accessories, which allowed them to show up with their suitcases right after install and immediately begin relaxing," shares Parker.

THE OUTCOME

Sums up the client, "Every aspect of our lake house design was meticulously designed with an extraordinary attention to detail. Working with [Parker] was an absolute pleasure, and the end result—an awe-inspiring custom luxury lake house—speaks volumes about her skill and dedication."

The screened porch offers a relaxed ambiance with RH's Lucia furniture, custom Perennials fabric pillows and a custom fireplace designed by White & Liebler Architects and built by Joel Peterson Homes.

