

MODERN LUXURY

Interiors

CHICAGO

RESORT LIVING

FROM CITYSCAPE TO
BEACHSIDE, A VACATION
HOME BECKONS

REAL ESTATE NOW

CHICAGO'S DESIGN-CENTRIC OFFERINGS & NEWS TO KNOW

PLUS

SPECTACULAR FAMILY-FRIENDLY DESIGN
BY TRACY HICKMAN & DSPACE STUDIO

SUMMER THORNTON BRINGS A HISTORIC
VICTORIAN BACK TO ITS GLORY

UP CLOSE & PERSONAL WITH ARCHITECT
JOHN RONAN & GALLERIST MONIQUE MELOCHE



MODERN COMFORT In the formal dining room, transitional dining chairs were paired with custom Benches in an ombre pattern from The Bright Group. "It's alpaca, so it's a soft, sumptuous fiber done on a modern piece of furniture for contrast," Hickman explains.



Estate of GRACE

Tailored furnishings and glam lighting enhance the surprisingly streamlined architectural details in a seemingly traditional suburban home.

By Tate Gunnerson

Photography by Werner Straube

"These clients wanted to bring a piece of the city to the suburbs," explains interior designer Tracy Hickman of the sprawling French colonial-style house in Hinsdale that she decorated for a software executive and his wife, and their three children. "They were willing to take risks," Hickman says, "so we created something that is edgier and a little more modern."

The owners were already working on the design of their new home with architect Mike Abraham, when the wife attended a kitchen walk in Hinsdale and realized the two spaces that captured her fancy were both designed by none other than Hickman. "Tracy and I had such similar taste," the wife explains. "I knew we would work well together."

Instead of the dark, traditional interior one might expect from the home's traditional limestone and slate exterior, Hickman selected a soft palette of gray hues



NEW TRADITION A space for playing music and chess, the open living area off of the entry has comfortable custom furnishings and a neutral color palette accented with splashes of color in the form of pillows covered in Fortuny fabrics.



SPACE BETWEEN From top: Instead of wall cabinets, a pair of built-in floor cabinets by O'Brien Harris provide storage and flank the refrigerator, which has been distinguished with antiqued mirror doors. "It's a little nod to tradition and adds a glamorous element," says Hickman. A band of wood frames the range, while the custom hood has rivets and seams to add industrial flair; a custom console in the living room, with Christian Liaigre lamps from David Sutherland, highlights a piece from the homeowner's art collection.

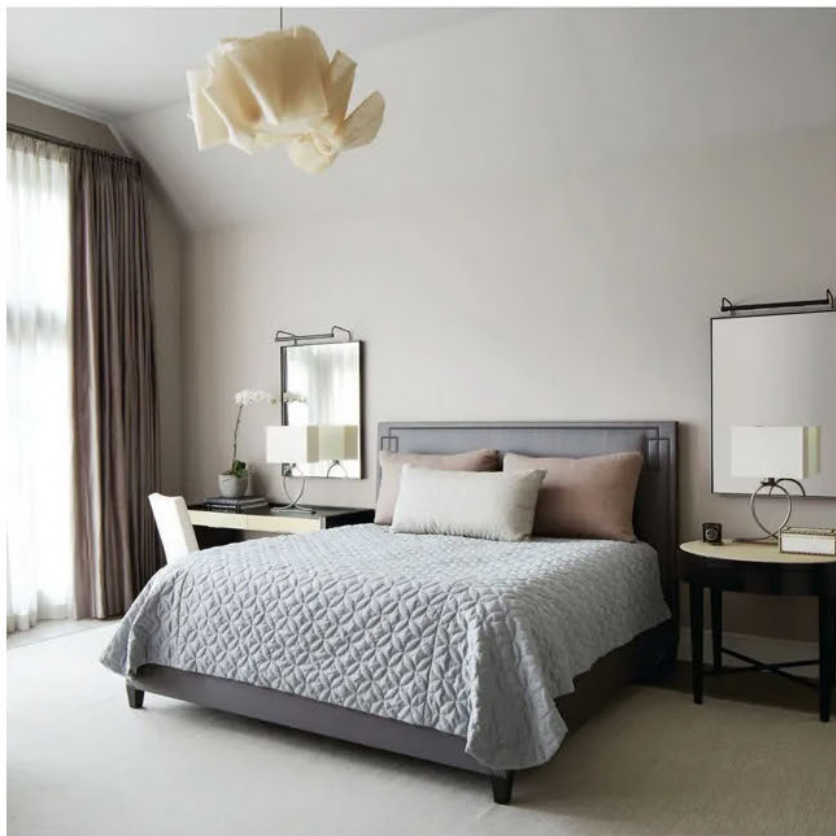
that unite the open spaces on the main level and also highlight the home's inherently modern architectural features. "We decided early on to keep the paint color on the whole floor consistent," Hickman explains. "The trim is the same color as the walls."

In the family area, Hickman incorporated a long sectional alongside a tufted ottoman, complete with a custom wooden drink tray. In a nearby bank of windows close to the open kitchen, she incorporated an extra long custom banquette with a modern table and a pair of transitional iron pendants. "Sometimes you want to contrast the architecture, and sometimes you want to play into it," Hickman explains. "There are also circular elements that kind of roll their way into the interior."

Indeed, large pieces of artwork with organic lines, and an elegant light fixture consisting of multiple glass globes hanging at different levels, play against the vertical wall paneling and white ceiling beams in the dining room. A round chandelier with rows of glass teardrops likewise juxtaposes the linear fireplace hearth and structured furnishings in the main living area. "Tracy pushed me on light fixtures, and I kind of bit down hard and trusted her," the wife explains. "I still feel excited about them. They elevate the house to another level of design and quality."

More subtle elements, such as lustrous bronze hardware, oiled and waxed oak flooring, and textural woven draperies, which





“SOMETIMES YOU WANT TO CONTRAST THE ARCHITECTURE, AND SOMETIMES YOU WANT TO PLAY INTO IT.”

—TRACY HICKMAN



both frame the view and softly filter the light coming in the soaring windows along the curvaceous open stairway in the entry foyer elevate the house to another level of quality as well.

The entry makes a wonderful receiving area during the couple's many parties. In fact, the entire house was designed with entertaining in mind. A two-sided bar outfitted with dark custom cabinetry, for example, services both the living area and sitting area off of the kitchen. And on the lower level, Hickman created a club-like atmosphere by adding another bar and an upholstered banquette covered in blue fabric. “The upholstery plays off of the slick surfaces in the bar,” Hickman explains. “It introduces some drama and color into the lower level.”

To accomplish the same in the kitchen, Hickman opted for tall custom floor cabinets inset into the wall

instead of traditional uppers. A band of matching oak frames the range, which includes a massive custom hood with exposed rivets. Understanding that most lighting pendants would get lost in the large open space, Hickman instead chose a long handcrafted light fixture made of mottled-iron mesh—a direct contrast to the slick quartzite waterfall island. “We needed a heavy, large horizontal light fixture,” Hickman explains. “It’s a substantial artisan piece.”

Two years after the wife first saw Hickman's work on a kitchen walk, she was happy to participate in the same event, and Hickman's design earned rave reviews. Afterward, the owners hosted nearly 200 of their besties for a catered bash with a DJ, dancing and a fully stocked bar. “Every space was being used, so it felt like we were having three parties at once,” the wife explains. “It all came together so nicely.” ■

SOOTHING SYMMETRY From left: The serene, neutral palette continues in the master bedroom, which features a custom nailhead-trimmed headboard, a desk from C.A.I. Designs and a custom nightstand with a glazed linen top and lamps from Casamidy. The ethereal pendant is handmade from banana fiber from The Future Perfect. The bedding is all custom-made from Cowtan & Tout, Holly Hunt and Holland & Sherry fabrics; a custom table from Gregorius Pineo juxtaposes the curvaceous open stairway in the formal entry. The oiled and waxed oak floors add a textural element for balance.



ALL LINED UP
The sitting room is designed for formal entertaining with its grouping of Bolier & Company chairs and concrete-topped tables from **BRADLEY**, not to mention the expansive windows providing a lush view of the landscaping.

DESIGN DETAILS

TYPE

Single-family home

LOCATION

Hinsdale

ARCHITECTURE

Michael Abraham Architecture

michael-abraham.com

INTERIORS

Hickman Design Associates

hickmaninteriors.com

KITCHEN DESIGN

O'Brien Harris

obrienharris.com

BUILDER

Tiburon Homes

tiburonhomesllc.com

MILLWORK

Creative Millwork

creativemillworkllc.com

RESOURCES

Anes Upholstery

Custom sofa, sectional, chaise, bench, lounge chairs, living room console, counter stools, side chairs, kitchen chairs and banquettes all designed by Tracy Hickman

anesupholstery.com

A. Rudin

Dining room light fixture

arudin.com

BDDW

Living room console

bddw.com

BRADLEY

Coffee table, sitting room tables

bradley-usa.com

David Sutherland

Porter Teale cushions in foyer, Christian Liaigre living room table and console lamps, and Ochre chandelier

davidstherlandshowroom.com

Donghia

Living room, foyer and kitchen drapery; bedroom cushions; and powder room wallpaper

donghia.com

Holly Hunt

Dining table; John Hutton side chair; Gregorius Pineo lighting, console and side tables; Great Plains fabric on living room sofa, kitchen banquettes and master bedroom

hollyhunt.com

Jean de Merry

Living room pillows, bolsters and powder room pendants

jeandemerry.com

Paul Ferrante

Sitting room light fixture

paulferrante.com